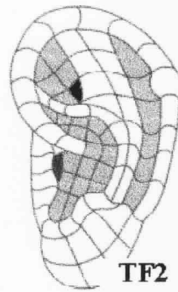
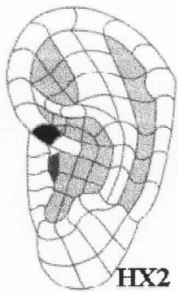
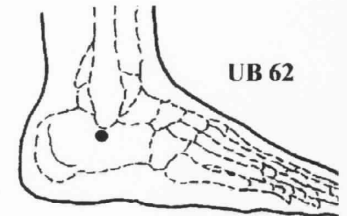
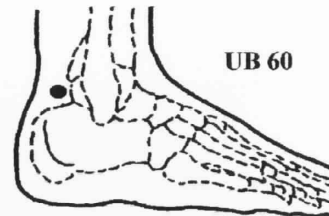
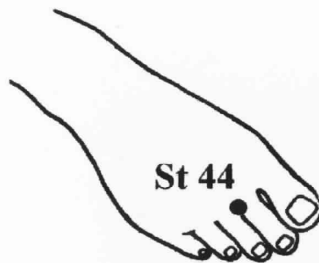
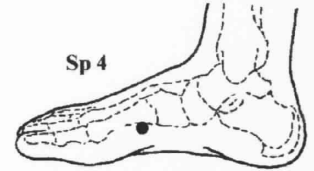
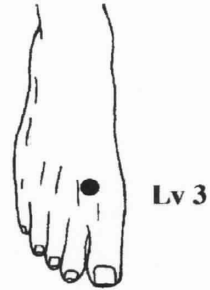
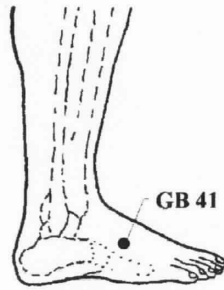
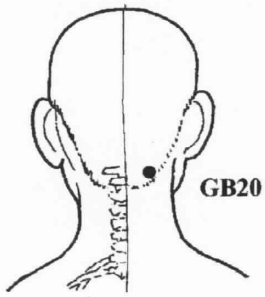


AcuPoint Analysis

PAIN LOWER BODY*

Points



Pain Lower Body

GB20 This point is right under and against the base of the skull, in the two small muscular grooves at the back of the neck, two to three inches apart depending on the size of the head.

GB41 On the top of the foot, in the valley between the smallest and fourth toes, midway between the separation between the toes and where the foot joins the leg.

LV03 Two cun above the separation between the biggest and second toes, on the top side of the foot.

SP04 On the inner edge of the foot two cun from the large bulging joint where the big toe joins the foot.

ST36 The width of one hand (3 Cun) below the bottom of the kneecap, and the width of one thumb (1 Cun) toward the outside of the leg (direction of the small toe.) Found in the trough or valley where the two most prominent bones of the calf come together.

ST44 Just behind the separation between the second and third toes.

UB60 In the hollow (or valley) behind the crown of the outer ankle.

UB62 In the first indentation directly below the outer anklebone. This hollow is one-third the distance from the outer ankle bone to the bottom of the heel.
EHX02 Diaphragm .C

ETFO2 Master Point 1, (Shen Men), French Hip, Chinese Shen Men (Divine Gate), Pelvic Cavity, French Wonder Point. Located in the middle of the 2st zone of the Triangular Fossa. This master point alleviates pain, tension, anxiety,

